

Security Door Bolts

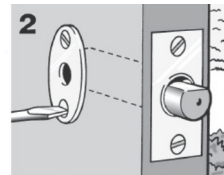
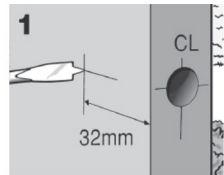
Fitting instructions

1. Mark horizontal line on door edge and inner face at desired height, intersect with centre line on door edge. Carefully drill a $\varnothing 16\text{mm}$ hole, 64mm ($2\frac{1}{2}''$) deep for bolt body, ensure drill is level and straight. Measure 32mm ($1\frac{1}{4}''$) from door edge and carefully drill $\varnothing 10\text{mm}$ hole in inner face until it breaks into hole for bolt body.

Do not drill right through door.

2. Fit door bolt into door edge. With face plate vertical, mark around edge, remove and chisel out so face plate lies flush. Mark and prepare fixing holes, secure with screws provided. Check operation and place oval plate centrally over keyhole, fix with screws provided.

3. Close door, operate bolt so that point on end of bolt marks position on frame. Carefully drill a $\varnothing 16\text{mm}$ hole to appropriate depth to accept bolt when fully thrown (depth=16mm). Position rectangular plate over hole, sink flush with frame and fix with screws provided. Check operation.



It is recommended two bolts are fitted to each door.

Maintenance

Clean and lubricate the lock regularly with a light oil spray.

Warranty

BURG-WÄCHTER UK Ltd, guarantee this product against faulty materials and workmanship for 2 years. Please retain this bag for future reference.

We reserve the right to change technical specification including slight variation in size and weight.

BURG-WÄCHTER KG

Altenhofer Weg 15 58300 Wetter Germany