

Security Door Chain

Fitting instructions

1. Position the large rail plate close to the edge of the door and mark the position of the holes with a pencil or bradawl. Carefully fit the screws in position making sure the plate remains horizontal.

Caution:

- Avoid any glass in the door
- A pilot hole may be required for hardwood doors
- Do not over-tighten screws

2. Align the staple and chain on the edge of door frame and mark the position of the holes, making sure the staple is in the correct position with the large hole at the top. The hole is where the chain is placed when not in use.

Timber doors

A pilot hole may be required for hardwood doors. Do not over-tighten screws (supplied).

uPVC doors

To enable a secure fit, uPVC doors require different fixings (not supplied). Use self tapping screws if there is reinforced metal inside the door or frame and use jack nuts where there is no reinforcement.

Directions for use

Locate the end of the chain into the opening on the door rail and slide along the channel. The door can now be opened with the chain engaged for safe caller identification.

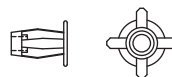
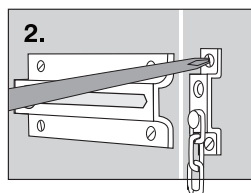
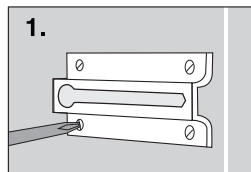
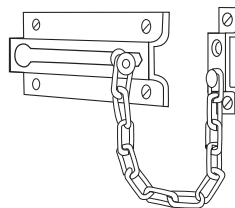
Warranty

BURG-WÄCHTER UK Ltd. guarantee this product against faulty materials and workmanship for 2 years. Please retain this bag for future reference.

We reserve the right to change technical specification including slight variation in size and weight.

BURG-WÄCHTER KG

Altenhofer Weg 15 58300 Wetter Germany



Jack nut

