

The Sterling logo consists of three horizontal lines of varying lengths to the left of the word "Sterling", which is written in a white, sans-serif font. The entire logo is positioned in the upper right corner of the page.

≡ Sterling

Series

4004

W i r e l e s s

Alarm

S y s t e m

U s e r M a n u a l

Table of Contents

Important Information	2	Creating a Personal Security Code	7 - 8
Control Panel Features	3	Detectors and Zones	9
Battery Backup – Central Control Panel	4	Assigning a Detector to a Zone	10
Low Battery Indicators	4	Erasing a Detector From a Zone	11
400 Series Operating Modes	4	Testing the Control Panel	11
Notification Modes	5	Arming the System	12
Dedicated Alert Mode (Zone 4)	6	Disarming the System	13
Armed/Alarm Settings	6	Bypassing a Zone	13
Placement of the Central Control Panel	7	Troubleshooting	14 - 16
		Warnings and Information	17 - 18

Important Information

Before connecting or operating the Central Control Panel, please read these instructions carefully and save this manual for future reference.

The **400 Series Wireless Alarm System** is one of the most affordable and expandable wireless alarm systems available. You'll discover that the system offers many features typically found in custom installed Alarm systems.

The **400 Series Wireless Alarm System** is reliable and easy-to use. You can start small and expand as you need.

The **400 Series Wireless Alarm System** uses digital technology which provides increased security and trouble-free wireless connections. It only responds to signals from your Detectors / Accessories in and around your home and avoids anyone from tampering with your system.

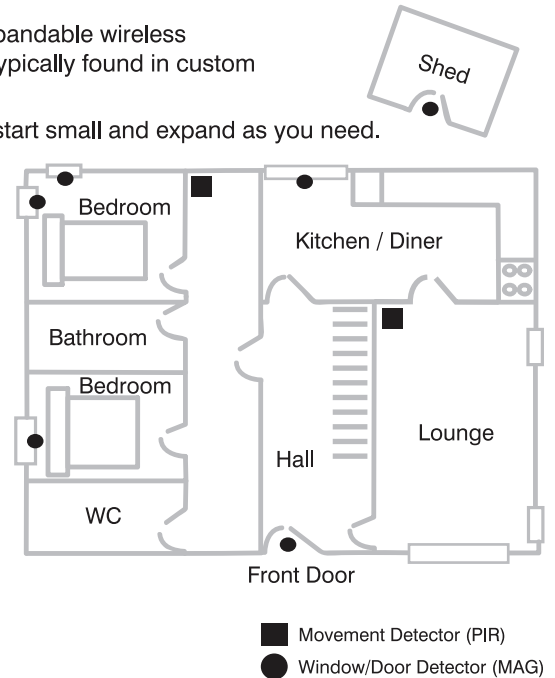
The user manual explains in simple steps how to install, use and care for your new **Sterling 400 Series Wireless Alarm System**.

Before you begin to install your **400 Series Wireless Alarm System**, you will need to plan your security needs. Consider all the doors and windows that are likely to be used as points of entry by an intruder, such as those poorly lit or an entrance or window that cannot be easily seen from the street.

To start, sketch a map of areas in and around your home and determine which doors and/or windows need Contact Detectors, which areas that might best be served by a Movement Detector, etc.

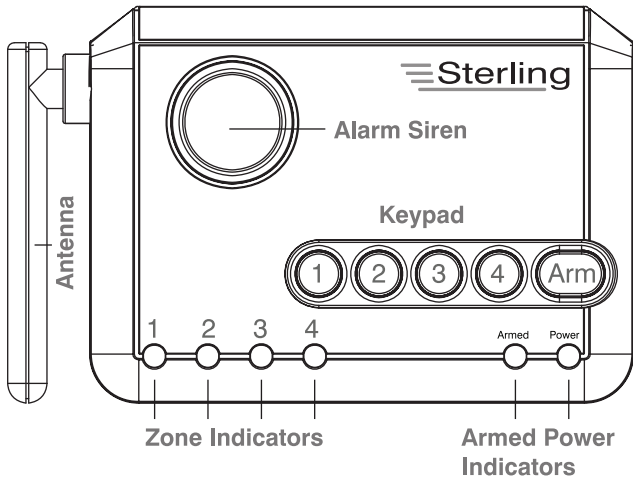
The **400 Series Wireless Alarm System** can manage up to 16 detectors. (A maximum of any four (4) Detectors in any of the four (4) protection Zones).

Note: Movement Detectors (PIR's) can also be used to protect specific items that might be targeted by intruders (i.e. electronic equipment, TV's, stereos and/or computers). Position the Movement Detectors (PIR) so it is directed at the equipment from an opposing wall or corner.



Central Control Panel

Indicators and Features:



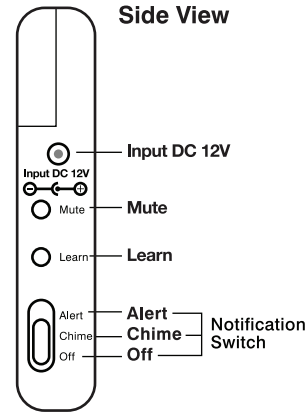
Zone Indicators

These LEDs indicate detector status for each of the 4 Zones in the Wireless Alarm system.

Keypad Operations:

Armed and Power Indicators

These LEDs indicate status of the system.



Arm button - Use this button on the keypad to select the arm setting (HOME or AWAY) you wish to use.

Input DC 12 V - AC adapter input jack.

Mute Button - Used to mute a triggered Zone. (See pg 6)

Learn Button - Used to link Detectors and Accessories to the main unit. (See pg 7 - 8)

Features

Battery Back-up (Central Control Panel)

The Control Panel offers battery backup; up to 48 hours, in case of power failure. While the system will operate correctly without batteries, it is highly recommended to install four (4) new “AAA” Alkaline batteries. To install batteries, unplug the AC adapter from the Control Panel and rotate the unit bottom side up, revealing the battery compartment on the base. Slide the battery compartment cover off in the direction of the arrow. Install batteries according to the battery polarity diagram inside the battery compartment. Replace the battery door.

Note: The Control Panel has an automatic internal battery tester. After batteries are installed you can check the backup battery status at any time by unplugging the AC adapter. If the batteries are acceptable, the green ‘Power’ LED indicator will remain on. If the batteries are low, the LED indicator will flash slowly. If the batteries are too low to power unit, or dead, the LED indicator will be off.

Low Battery Indicator (Detectors)

The Control Panel continuously monitors all the Detectors. If the Control Panel does not receive a signal from any Detector it will begin rapidly flashing the Zone LED indicator. This indicates one or more Detectors in the Zone may have low battery power and are unable to transmit a signal the necessary distance. If all batteries and/or Detectors are installed at the same time into a Zone, it is recommended to replace the batteries in all Detectors in the Zone.

However, you can check the Detector’s status independently by placing the Control Panel in Test mode (see Testing a Detector on page 11) and trigger each Detector separately (i.e. open door). If the Detector does not trigger an alert then replace the batteries.

Note: The detection status system is ‘range dependant’, which means detectors located closer to the Central Control Panel may seem to have batteries that last longer than those Detectors at a greater distance. Also, keep in mind, because the Movement Detector (PIR) is continually checking for activity the battery life is less than the lithium cell batteries in the Door/Window Detector (MAG). An Alkaline “9V” battery in the Movement Detector can last up to 9 months; the Lithium cell batteries in the Door/Window Detector (MAG) can last up to two years. If the Movement Detector is in a Zone with other Detectors, try replacing the Movement Detectors battery first.

INTRODUCTION

Let’s review the different features, functions and terminology of the Central Control Panel. The **400 Series Wireless Alarm System** operates in three different modes

1. Notification Mode (Zones 1, 2, 3) **2. Dedicated Alert Mode** (Zone 4) **3. Armed/Alarm Mode** (Zones 1, 2, 3)

Mode 1 Notification Mode – Alert /Chime/Off (Zones 1, 2, 3)

Perfect for Door / Window (MAG) & Movement (PIR) Detectors (alarmed areas)

- Unarmed immediate notification mode
- User is notified of triggered Detector based on position of notification switch.

Notification switch settings:

Off – In this mode when a Detector is activated, the Control Panel will issue a visual Alert only (flashing Zone LED indicator), no audio will be heard. The LED indicator will continue to flash as long as the Detector is activated (door or window is open, etc.)

Chime – In this mode when a “MAG” Detector is activated the Control Panel will issue a two-tone chime sound. In addition, a visual Alert (flashing Zone LED indicator) will continue as long as the Detector is activated (open).

Note: A Movement Detector (PIR) in Zones 1, 2 or 3 will not respond in the Chime mode. It only functions as an Alarm Detector.

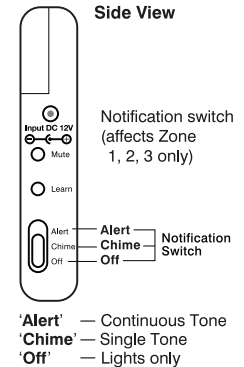
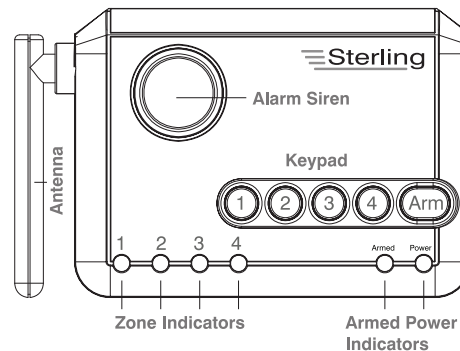
Alert – (Beeping sound) In this mode when a Detector is activated, the Control Panel will issue a continuous Alert (beeping sound) and a visual Alert (flashing Zone LED indicator). Both the flashing LED indicator and the beep sound will continue until Detector is deactivated (door or window is closed, etc.). The number of beeps will be determined by which Zone has an activated Detector.

Zone 1 - you will hear “1 beep...1 beep...1 beep, etc”.

Zone 2 - you will hear “2 beeps...2 beeps...2 beeps, etc”.

If a Detector in more than one Zone is triggered, (i.e. Zone 1 and Zone 2) then you will hear . . .
“1 beep...2 beeps..., 1 beep... 2 beeps, etc.”

Note: A Movement Detector (PIR) in Zones 1, 2 and 3 will not respond in the Alert mode. It only functions as an Alarm Detector. A Movement Detector can be used for an Alert in Zone 4 only.



Mute

Use this button, while in Alert mode, to temporarily stop the continuous beeping Alert (e.g. a window open. To activate mute for a certain Zone, press the Mute button after the beeping starts. All triggered Detectors in the Zone will be muted and the LED indicator will continue to flash until the Detector has been reset. To deactivate the mute, reset the Detector (close door or window etc) for that Zone. If more than one Zone has a triggered Detector, pressing the Mute button will mute all triggered Zones.

Mode 2 *Dedicated Alert Mode*

Zone 4 is a dedicated Zone for alerts only; it is designed for continuous monitoring.

It works independently of the Notification Mode switch and the Alarm System. Detectors in Zone 4 will not trigger an alarm (HOME or AWAY). Detectors in Zone 4 do not respond to the Off/Chime/Alert Notification Mode switch.

Mode 3 *Armed/Alarm Mode* (Zones 1,2,3)

Arm HOME (Instant alarm)

In this setting the alarm is instant (no delay) when a Detector is triggered. All Detectors (except Movement Detector (PIR)) in Zones 1, 2, and 3 will trigger the alarm.

Detectors in Zone 4 will not trigger the alarm. Zone 4 is for Alerts only.

Arm AWAY (Delayed alarm)

In this setting there is a 45 second exit delay before system is armed. This allows time to leave the protected area.

There is also a 30 second entry delay; this allows time to enter the protected area and disarm the system before alarm sounds. All Detectors in Zones 1, 2, and 3 will trigger the alarm. Detectors in Zone 4 will not trigger the alarm.

Zone 4 is for Alerts only.

Disarm

Entering the 4 digit Security Code anytime the system is armed, will immediately disarm the system, regardless of HOME or AWAY setting

Bypass

You can bypass a Zone so that any Detectors in that Zone (1, 2, and/or 3) will not trigger the alarm regardless of HOME or AWAY setting.

Initial Setup

Use the following tips to select an ideal location for the Central Control Panel. The panel can be free standing on a table or shelf. Alternately, it can be wall mounted using the keyhole slots at the back of the unit.

Position it...

- In a central location of the home, within a few feet of an electrical outlet.
- Some place accessible and easily noticed.
- Away from doors and windows where it could be easily noticed by intruders.
- Away from heat sources such as an oven, stove or vents.
- Away from large metal objects (such as refrigerators, microwaves, etc.) which could effect the wireless performance.

After you have selected a location for the Central Control Panel, you are ready to set up your system.

1. Plug in the AC adapter to a nearby electrical outlet and plug the other end into the “Input DC12V” jack on the side of the unit. All the LED indicators on the front of the unit will light up briefly and go out. This indicates the Control Panel has completed a brief system check.
Only the green power LED indicator should remain on.

2. Place the Control Panel in the selected location and rotate the antenna to the upright position for best reception. The Control Panel should be able to receive signals from Detectors and Accessories up to 50 metres away (Free airspace).

Creating a Personal Security Code

The Security Code is used to arm and disarm the alarm system. The Control Panel comes with a factory default Security Code setting of “1 2 3 4”. It is recommended to establish your own Personal Security Code.

To change the Security Code, locate the Learn button on the side and Arm button on top.

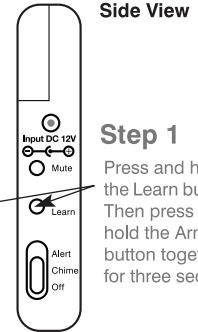
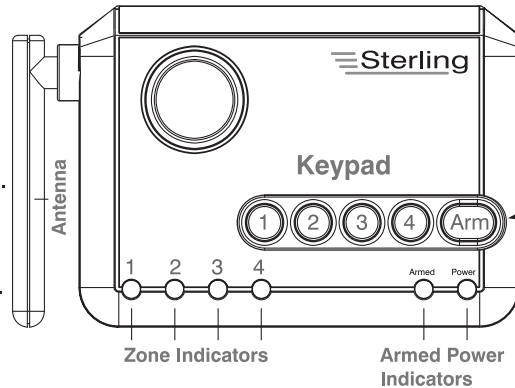
Note:

When setting the Security Code you have 15 seconds to begin making the change.

After 15 seconds the unit will time out and return to stand-by mode. If this happens you will need to start again.

Step 1

- A.** Press and hold the **Learn** button (unit will beep).
- B.** While continuing to press the **Learn** button, press and hold **Arm** button (within three seconds).
- C.** When Control Panel sounds a long beep, release the buttons.
The green LED power indicator will begin flashing. This indicates the unit is ready to change the Security Code.



Step 1

Press and hold the Learn button. Then press and hold the Arm button together for three seconds

- Step 2** While the LED indicator is flashing, enter the current Security Code into the keypad (if new, enter the default factory Security Code of '1 2 3 4'.)

- Step 3** Enter your **new** four digit Code.

- Step 4**
 - A.** Enter your **new** four digit Code again to confirm.
 - B.** A long 'beep' will sound and the green LED indicator will stop flashing.
Your new Code has been set.

Note:

If the Security Code is lost or forgotten, you can restore the Control Panel back to factory default Security Code setting ('1 2 3 4'). Remove the batteries and AC adapter. Press and hold the Learn button and plug the AC adapter back in (continue pressing the Learn button).

Wait until all 4 Zone LED indicators are on and the Zone 1 LED indicator begins to flash. The Control Panel will need four hours to reset the Security Code back to the factory Default '1 2 3 4'. Once all Zone LED indicators turn off, the system will be reset to the factory default.

The alarm system cannot be used during this four hour reset process.

Detectors and Zones

There are four Zones, and each Zone can hold up to four Detectors.

Any combination of Detectors (Movement (PIR) and Door/Window (MAG)) can be assigned to any of the four Zones.

If you decide to expand, it is important to know you can always add more Detectors (16 in total).

Zones 1, 2 and 3 are designated for Arm/Alarm, or Notification modes.

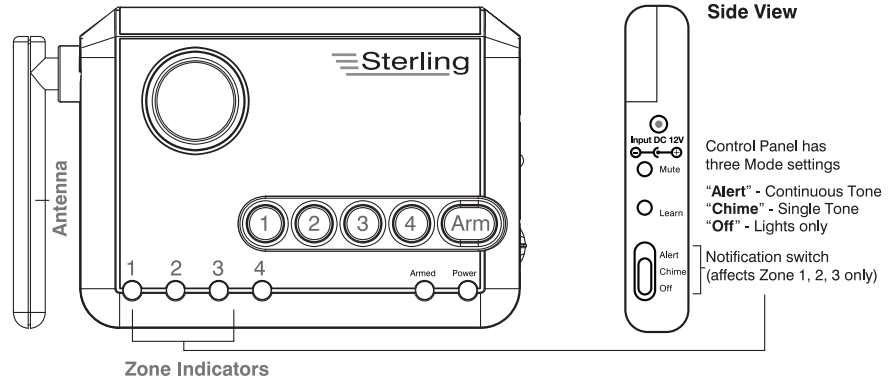
Zone 4 is designated for detected Alerts only.

Use Zone 4 for areas you wish to continuously monitor, but don't want to trigger the alarm (e.g. notification of a door is open or a storage shed or workshop is unsecured, etc).

Detectors placed in Zone 4 will not activate the Alarm or Chime.

When a Detector is triggered in Zone 4, the Detectors Control Panel will sound a repeating Alert (4 beeps) and the Zone 4 LED indicator will flash continuously. These Alerts will continue until the Detector is closed.

You can Mute the repeating Alert sound but the LED indicator will continue to flash until the Detector is reset/deactivated (i.e. door is closed).



Here are some examples of possible Detector/Zone combinations.

Example 1 (2 detector system)	Example 2 (4 detector system)	Example 3 (6 detector system)
Zone 1 – One Door Detector (front door)	Zone 1 – Two Door Detectors 1 x front door 1 x back door	Zone 1 – Two Door Detectors 1 x front door 1 x back door
Zone 2 – One Movement Detector (hallway or central area)	Zone 2 – One Movement Detector (hallway)	Zone 2 – Two Movement Detectors (hallway & living room)
Zone 3 – Not used	Zone 3 – One Movement Detector (living room or landing)	Zone 3 – One Movement Detector (Landing)
Zone 4 – Not used	Zone 4 – Not used	Zone 4 – One Door Detector (patio door or shed door) Zone 4 LED will flash to notify if door left open but will not sound alarm

Assigning a Detector to a Zone

Assigning a Detector in to a Zone is an easy 4 step process; however there are a few points to remember

- Only one Detector / Accessory can be assigned at a time.
- A Detector cannot be assigned to two different Zones.
- Up to four Detector can be added per Zone (if a fifth Detector is added then the first Detector will be replaced.)
- Batteries must be active in the Detector before it can be assigned to a Zone.
- Detector can be assigned to a Zone and then mounted, or can be mounted and then assign to a Zone.

The Door/Window Detector (MAG) use Lithium batteries. To activate the batteries, remove the yellow battery activation strip. For the Motion Detector, attach the “9V” battery leads to the battery.

Follow these steps to assign a Detector to a Zone

Step 1 – Press and hold the Learn button on the Control Panel for three seconds. The Control Panel beeps once. Release the Learn button.

Step 2 – Press the Zone button (1, 2, 3 or 4) for the Zone you want to assign to the Detector. The LED indicator for that Zone will begin to flash.

Step 3 – Release the Zone button.

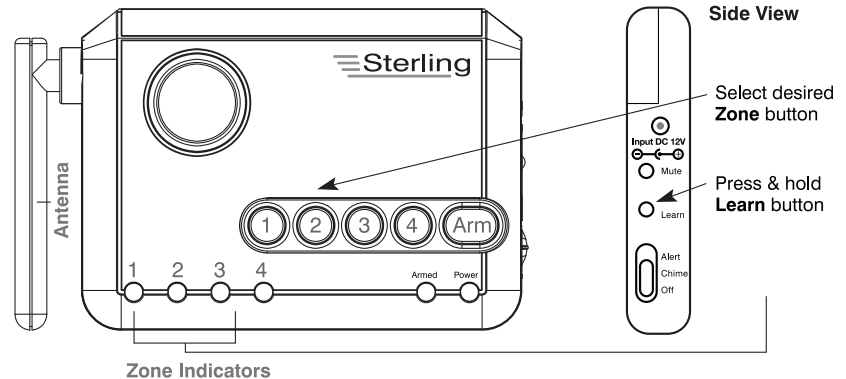
Note: Zone 4 is for dedicated alerts only. Detectors in this Zone will not trigger an alarm or chime or chime.

Step 4 – Activate the Detector

For the Door/Window/Door Detector, separate the two pieces or if mounted, open the door or window.

For the Movement Detector press the Learn button located inside the battery compartment, or if mounted wave your hand in front of the Detector: (red LED indicator will flash inside lens area in front of Movement Detector).

The Detector is now assigned.



Erasing a Detector from a Zone

Note: If you need to remove a Detector from a Zone, the system will erase the entire Zone, so any other Detectors will need to be put back into that particular Zone.

Step 1 - To erase a Zone, press and hold the Learn button on the Control Panel. The unit will beep once.

Step 2 - While holding the Learn button, press and hold the Zone button to be erased. After five seconds the Control Panel will sound two beeps and the Zone LED indicator will flash twice.

Step 3 - Release all buttons. (All Detectors on this Zone are now erased).

Note: The Zone/Detector cannot be erased if:

- The Zone has been triggered for an Alert or alarm. The Detector/Zone must be reset.
- There is loss of signal from the Detector to the Control Panel (such as low battery, or Detector is out of range).
- The system is armed.

The Control Panel will sound three beeps to indicate it could not erase the Zone.

Testing a Detector or your system

Once all the Detectors/Accessories have been assigned to Zones in the Control Panel you can now test your system.

This allows you to test a Movement Detector in Zones 1, 2, 3 without arming the system.

Ensure the Control Panel can receive the signal from the intended location of the Detector before permanently mounting a Detector.

Step 1 - Unplug the AC adapter from the Control Panel and remove batteries.

Step 2 - Press and hold the 'Mute' button and plug the AC adapter back into the Control Panel. When all the LED indicators turn on, release the Mute button. The Control Panel is now in Test Mode and any Detector can now be tested in any Zone.

Step 3 - Set the Notification Mode to 'Alert' position (see Notification Mode switch Page 5) and begin activating Detectors one at a time.

Note: For the Movement Detector, stand in front of the Detector and remain motionless for 20 seconds. Begin moving and if the Detector is within range of the Control Panel it will activate the Zone in the Control Panel for 15 seconds.

Step 4 - When testing is complete, unplug the AC adapter from the Control Panel, then plug the AC adapter back in and reinstall batteries. This returns the Control Panel to standard operation mode.

Note: The Control panel will automatically return to standard operation mode after 5 hours.

Arm (AWAY) – Delayed alarm for entry/exit.

To set system in AWAY mode

Step 1 - Enter your four digit Security Code.

Step 2 - Press the Arm button two times.
The red alarm LED indicator will flash continuously.

Note: If a Detector is triggered in Zone 4 it will not activate the alarm. It will sound an alert tone only. (See Zone 4 page 9).

After the system is armed a 45 second delay begins. This is to allow time to leave the protected area before system is active. The Control Panel will begin beeping and the Armed LED indicator will begin to flash. During the last 10 seconds the beeping will speed up indicating the alarm will arm shortly. Once the alarm has become active, the red LED indicator will continue to flash until system is disarmed.

In the Arm/AWAY setting, all Detectors 1, 2, and 3 will trigger the Alarm System.

All Door/Window Detectors (MAG) must be closed/not activated in order to set the alarm.

Arm (HOME) – No delay, instant alarm.

To set the system in HOME mode

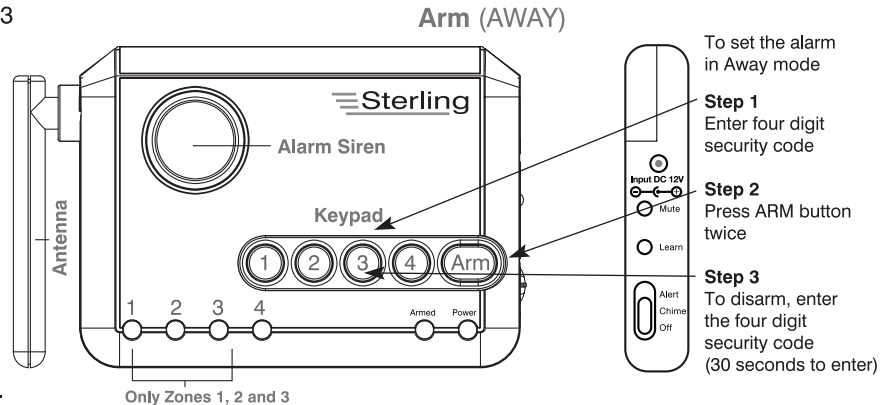
Step 1 - Enter your four digit Security Code.

Step 2 - Press and hold the Arm button for two seconds.
The red Arm LED indicator will turn on.
The system is now Armed.

This setting is used when you wish to secure the area but will be home and moving around within the armed area. In the Arm/HOME setting, any Movement Detector in Zone 1, 2, and 3 will not operate.

All Door/Window Detectors (MAG) must be closed/not activated in order to set the alarm.

Note: If a Detector is triggered in Zone 4 it will not activate the alarm. It will sound an alert tone only. (See Zone 4 page 9).



Disarming the System

When you return to the protected area the unit will trigger and give you 30 seconds to disarm the system. (Armed Away)
To disarm the system at any time, enter the four digit Security Code. Entering the four digit Security Code will disarm the system during the 30 second delay entry period.
If the alarm has been triggered and the siren is sounding, enter the four digit security code to disarm.

Bypass a Zone (For all Zones and Modes)

There may be occasions when you would like to temporarily prevent the Detectors in a Zone from triggering the alarm. In this situation you can bypass a Zone when setting the alarm. Once the alarm is disarmed the Bypass setting will be removed.

Step 1 - Select the Zone to bypass. Before arming the system, press and hold the Zone button for three seconds. The Control Panel sound a long tone while the button is pressed. After three seconds the tone will stop and the Zone LED indicator will turn on.

The Zone has been set to bypass

Note: Detectors in a bypassed Zone will not trigger the Alarm, Alert or Chime functions.

Step 2 - Arm system (HOME or AWAY).

Step 3 - The Bypass setting can be removed by pressing and holding the Zone button again for three seconds or by disarming the system.



Troubleshooting

Q. I am trying to program my security code and I keep waiting on the beep. But, nothing happens. Why?

A. There is a short beep that you hear as soon as you press the Learn button. After you hold the Learn button for about 3 seconds you will hear a long beep; once the long beep sounds you have 15 seconds complete the other steps in the process.

Q. I bought a new Detector and the Control Panel will not recognize it. Why?

A. First, make sure that the batteries are new and that the battery is inserted into the Detector according to polarity (+/-) markings. Second, make sure that you have assigned the Detector to a Zone. If the Detector LED is flashing rapidly all the time, remove and reinsert the battery.

Q. I put the Detector on Zone 4 and it will not set off the alarm. Why?

A. Zone 4 is a Dedicated Alert Zone and is designed to monitor Detectors in this Zone. It will only issue an alert (LED will flash, continuous beeping will be heard). Detector in Zone 4 will not set off the alarm. Use Zone 4 for areas that you want to monitor (i.e. areas that you want to be alerted if there is a problem, but do not want the alarm to sound).

Q. I have trim on my door and I cannot match my Detector to the magnet contact. Will this work on my door?

A. The Detector can be up to 12mm (½”) apart from the magnet.

Q. I erased a Detector from a Zone and now all of my other Detector in that Zone will not work. Why?

A. The system can only erase entire Zones. You will need to add the other Detector back in that Zone to the Control Panel again

Q. Why does one of my Zones continually flash?

A. This can be caused by 1 of 2 conditions.

First condition, if it is a rapid flash it means a Detector in the Zone has a low battery. If more than one Detector is in a Zone, you will need to test each Detector by putting the unit into test mode (see pg. 11 of manual). It may also be that a Detector is out of range and cannot make contact with the Control Panel. If this is the case, you may need to move the Control Panel closer.

The Second condition, if it is a slow flash, one of the Detectors is triggered. Check all Detectors to ensure the Detectors in the Zone are reset (i.e. close door, window, etc).

Q. If one Detector has a low battery, should I replace all of the batteries?

A. If Detectors were added at the same time, it is likely all the batteries will need to be replaced.

Q. How do I know if any Detector s have low batteries?

A. The Control Panel will indicate if any Detector does not have sufficient power to transmit a status signal (battery is low). You can also check each Detector independently by using the Test Mode (see pg.11 in manual).

Q. If one Detector has a low battery; will the other Detectors in the Zone (or other Zones) continue to operate?

A. Yes, as long as the other Detectors have sufficient battery power, they will continue to transmit information to the Control Panel and the system will operate normally.

Q. I programmed all my Detectors to a Zone but only 4 work. Why?

A. This system is designed to hold 4 Detector s per Zone. If you add more than 4 then the first Detector added will be deleted to make room for the new Detector. If you have more than 4 Detectors you will need to use multiple Zones.

Q. I switched the Control Panel to off but the lights are still on. Why?

A. More than likely you are changing the position of the Zone Notification switch to the 'off' position. When you set this switch to off position, this turns the chime and alert notification sounds off; It does not "turn" the Control Panel off. The Control Panel does not have an off switch; to disable the Control Panel you will need to unplug the adaptor and remove the batteries.

Q. When I arm the system my motion Detector doesn't trigger the alarm. Why?

A. The motion Detector is designed to work in the AWAY mode but not the HOME mode. This allows you to have the system armed and still be able to move about the house.

Q. The manual states there is a 48 hour back-up. Do I have to reprogram the Zones if it has been without power longer than 48 hours?

A. No, the Control Panel will store the Zone and Security Code Settings indefinitely.

Q. One of my Detectors was damaged and the Control Panel keeps flashing how do I stop this?

A. First, unplug the adaptor and remove the batteries for 5 seconds. Then, replace the batteries and plug-in the adaptor. Next, you will need to clear the Zone (see pg. 11) and re-assign all of the Detectors to the Zone, including the replacement detector.

Q. I have my shed door Detector in Zone 4. If I want to leave the door open how do I stop the continuous beeping?

A. Press the Mute button on the Control Panel. This will temporarily mute the beeping sound for all Detectors in Zone 4. The Zone 4 LED will continue to flash until the door is closed/ Detector is reset. Once the Detector is reset beeping will start again when Detector /door is opened.

Q. The Silent Alert is flashing how do I make it stop?

A. On the Control Panel, arm the system in HOME mode and then disarm the system. This will send a reset signal to the Silent Alert which will stop the flashing.

SERIES 400 Battery details

Model No.	Description	Battery Type	Battery Life*
400W	Central Control Panel	(4) "AAA" Alkaline	24 months
400MAG	Door/Window Detector (MAG)	(1) "2032" Lithium	24 months
400PIR	Movement Detector (PIR)	(1) "9V" Alkaline	9 months

*maximum potential life based upon usage and location

Other components might be added to the Sterling 400 Series Wireless Alarm System.

Please check the Sterling website for updates. www.sterlinglocks.com

WARNING

Limitations of Alarm Products

This product should be tested periodically to make sure it is working properly. The product, if used properly, may reduce the risk of burglary, robbery, or other adverse events. However, Sterling Locks Limited is not an insurer, this product is neither insurance nor a guarantee that such an event will be prevented, and users should protect themselves with proper insurance. Sterling Locks Limited makes no representation that this product cannot be compromised or circumvented, that it will provide an adequate warning, or that it will prevent any personal injuries, property damage, or other losses. Like any alarm product, including expensive commercial systems, it may be bypassed, it is subject to compromise, and it may fail to warn for a variety of reasons, including, but not limited to: improper installation or positioning; improper maintenance; tampering; dead or improperly installed batteries; sensing limitations; component failures; receivers; for infrared products, intrusions may be outside of a product's designed range and certain environmental conditions may impact performance and audible alarm signals may be outside of hearing range, muted by doors, walls, and floors, unheard by deep sleepers or the hearing-impaired, or overwhelmed by other sounds.

Risk of personal injury

- Prolonged exposure to alarm siren may cause permanent hearing loss

Battery Warning

- Remove batteries before storing the Alarm for extended periods
- Batteries may leak harmful liquids or ignitable materials or explode causing injury and product damage
- Do not mix old and new or other battery types
- Replace all batteries at the same time
- Replace fully discharged batteries immediately

If you have any questions or would like additional information please visit our web site www.sterlinglocks.com or contact our Customer Service 0113 391 1299

Important safeguards

1. Cleaning – Unplug adapter and remove batteries from control panel before cleaning. Do not use strong or abrasive cleaners or solvents. Use a dry cloth to clean the surface of the Control Panel. In case the dirt is hard to remove, use a damp (not wet) cloth for cleaning.

2. Water and Moisture – Do not use any component of this system in an exposed outdoor area except those specifically designed for that purpose.

3. Precautions - Do not attempt to disassemble the Control Panel or any of the Detectors or Accessories unless described in the user's manuals. There are no user serviceable parts.

4. Handle with Care – Avoid striking or shaking improper use or storage could damage the Control Panel. Modifying or tampering with the device or its internal components can cause a malfunction and void the Control Panel's warranty.

If you feel any part of the 400 Series Wireless System is not operating correctly as described, please contact Customer Service for assistance 0113 391 1299

Guarantee

This product (excluding batteries) is guaranteed for one year from the date of purchase against faulty materials or workmanship. We will repair or replace any faulty product. No liability can be accepted for any problems caused by fair wear and tear, buyer's negligence, improper fitting or use, local radio interference, wilful or accidental damage, or any consequential loss or damage howsoever caused. This guarantee does not affect your statutory rights and is valid in the UK and Eire only.

If an item develops a fault, the product must be returned to the address on the packaging with:

1. A copy of your original invoice/receipt.
2. A full description of the fault.
3. All relevant batteries.

For security, Recorded or Registered Post is recommended.

Wireless technical specifications

All components are designed and manufactured to provide a high standard of security protection and long, reliable service. In addition, the radio devices are tested and approved by the Radio Regulatory division of the Department of Trade and Industry (DTI) to ensure that they will not interfere with other radio equipment. No radio licence is required; however, the approved radio frequency is not protected from interference and may be withdrawn from use at any time subject to the DTI giving users an appropriate notice period.

We practice a policy of continued improvement and reserve the right to change specifications without prior notice.

Frequency: 433.92MHz



≡ Sterling

Series
400 Wireless
Alarm
S y s t e m

Sterling Locks Limited

Leeds Bradford Airport Industrial Estate
Harrogate Road, Yeadon, Leeds LS19 7WP

www.sterlinglocks.com